

NEWSLETTER FOR THE
**GUILD OF
 OREGON
 WOODWORKERS**

**OREGON
 WOOD
 WORKS**

Vol. #39, Issue 10
 October 2022
 Portland Oregon

IN THIS ISSUE	
President's Note	3
Education	4
Carving Classes	6
CNC Routing	8
2023 Master Events	11
The Shop	12
In Your Shop	14
Volunteer Corner	15
Cut Offs	16

**GENERAL MEETING PRESENTATION:
 PIONEER MILLWORKS
 PRESENTED BY JONATHAN TAYLOR
 TUESDAY, NOVEMBER 15, 2022
 AT THE MAC AT 7PM
 MULTNOMAH ARTS CENTER
 7688 SW CAPITOL HWY, PORTLAND, OR 97219**



Living in the Northwest, we have an enviable experience of being surrounded by forests. Miles of roads covered by green canopies of Doug fir and cedar are within an easy drive of Portland in any direction. We, as woodworkers, are the beneficiaries of this bounty. In September we were

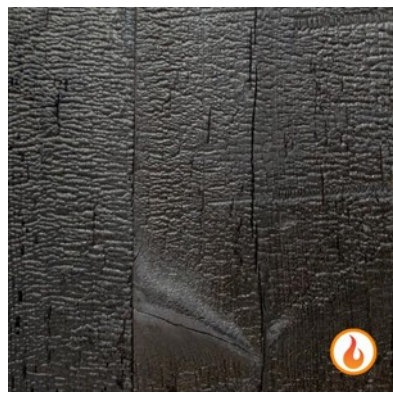
hosted by one of our major sponsors, Sustainable Northwest Wood. Northwest's commitment to sustainable sourcing allowed them to be major contributors to the new terminal at the Portland Airport.

For November's presentation, we will hear from another supplier of sustainable wood: [Pioneer Millworks](#). Pioneer provides sustainable [flooring](#) and [paneling](#) from Forest Stewardship Council (FSC) certified forests and small well-managed tree farms. They also have unique woods that are difficult to find elsewhere. One technique that I am particularly interested in is [shou sugi ban](#), or charred wood (see the photo of larch accented with white and compare it to the larch deep char to understand the range of effects). According to Pioneer, shou sugi ban follows the Japanese practice of [Yakisugi](#), a method of preserving and waterproofing wood by burning the surface. It also preserves the deep grains and weathered texture, which is then brushed to accentuate its hidden beauty.

Please join us at our monthly meeting **at the MAC at 7:00pm on Tuesday, November 15** for a live presentation by Jonathan Taylor. This session will also be broadcast over Zoom, for those who cannot attend personally.



Larch White



Larch, Deep Char

The Guild of Oregon Woodworkers is...

... a group of amateur and professional woodworkers committed to developing our craftsmanship.

Our Mission: To promote the craft of woodworking to the woodworkers of today and tomorrow.

Our Vision: A community of woodworkers that provide significant opportunities to develop, practice, enhance, and share skills.

The Guild offers many benefits for members, including:

- ◆ Monthly programs
- ◆ Monthly newsletter
- ◆ Weekly Volunteer Special Interest Groups (SIGs)
- ◆ An education program to help members develop woodworking skills through a variety of hands-on and lecture classes
- ◆ Sponsor discounts
- ◆ Woodworking shows (such as Gathering of the Guilds)
- ◆ Network of business partners.
- ◆ A woodworking shop
- ◆ A network of friends and opportunities to volunteer and make a difference in our community

What you can do for the Guild

- ◆ Volunteer your time to contribute, assist, organize, lead, teach
- ◆ Take a class
- ◆ Contribute your knowledge

Guild Officers

President -----Ed Swakon
 VP for Programs -----Carol Boyd
 VP for Member Support----Julie Boyles
 Secretary -----Michael Bourgo

Directors

Finance -----Tom McCloskey
 Planning-----Paul Ehrlich
 Shop Operations -----Aboo Balgamwalla
 Education-----Gary Weeber
 Community Outreach-----Tim Moore
 Membership-----Mike Sandmann
 Volunteers-----Charlie Meyer
 Communication-----Bland McCartha

Newsletter Editor/Publisher.....Linda Howarth

For more information see the Guild website or visit the shop.

Guild Shop - 7634 SW 34th St, Portland, OR 97219
Guildoforegonwoodworkers.org



WELCOME NEW MEMBERS

Welcome to our newest **33** members. We're happy to have you with us and hope you'll make a regular appearance at the monthly program (online or in-person), contribute articles to the newsletter, and volunteer in other ways.

- | | |
|------------------|-----------------------|
| Riad Alharithi | Eric Kikalo |
| Rob Artman | Casey Lay |
| Bennett Barch | Jason Lord |
| Martin Bidegaray | Justin Loveless |
| George Bradley | AJ Marin |
| James Brooks | Leighton Mitchell |
| Teresa Bubb | Thai Ngo |
| Robert Cantrell | Kellen Norwood |
| Mackie Davisson | Brent Paes |
| Justin Dumas | Seppi Ramos |
| Ben Golomb | James "Glenn" Simpson |
| Roy Harling | Nathan Snyder |
| Justin Haydt | Aaron Tien |
| Doug Hojem | Jaz Williams |
| Ruth Holland | Terry Wilson |
| James Huntley | Jennifer Wroten |
| Grace Ingolia | |



NOTES FROM THE GUILD PRESIDENT



Ed Swakon, President

Guild Studio Grand Opening & Member Thank You - A good time was had by All

This month we had a Thank You Party for our members. The event was at the Guild's shop and the highlight of the evening was the opening of the new Studio space. It was

on full display. Many of our Special Interest Groups (SIG) and program areas set up displays to let everyone know of the numerous opportunities that exist for our members.

This was the largest gathering of Guild members in over three years with over 150 registered, and it was great to see so many of you. There are

truly a lot of thanks to go around.

First, I'd like to thank Roger Crooks for taking charge and coordinating all aspects of the evening's event. Roger got the raffles together, the silent auction, the food and beer, and the pencils. You did get a Guild of Oregon Woodworkers pencil, didn't you? Thank you to all of our SIG and program leads for preparing the displays and making themselves available to answer questions. Thank you to Bland McCartha for taking charge of coordinating all of the new audio-visual equipment in the Studio and for the evening.

Recognizing Achievements

We celebrated a number of achievements from the past couple of years. For example, our Estate Team assisted over 150 "clients" (families needing assistance disposing of loved ones' tools, etc.) and we conducted seven estate sales with two more



planned before the end of the year. We recorded over 20,000 volunteer hours and I know that's only a fraction of the actual time committed to the Guild. We participated in the Gathering of the Guilds, Art-in the Pearl, and Multnomah Days, and several "Bird House" Builds with kids. Our Toy Team group made over 3,000 toys that were distributed to various community organizations throughout Washington and Oregon. Our Community Project Team delivered 12 custom nightstands to Rafael house and made new windows for the steamer "Portland's" engine room. Over the past several years we have awarded the Gig Lewis Volunteer of the Month Award to over 20 individuals. Many never physically received the award. I was pleased to hand out the newly designed awards to several past recipients who were in attendance Tuesday evening. And finally, over the past two years, we awarded our Woodworker of the Year Award to two individuals, Steve Poland (2020) and Aboo Balamwalla (2021) who were never able to get appropriate public recognition.

Capital Campaign and Capital Improvements heroes

Many members have been working very hard to get this space ready for our use. Thank you to our Capital Campaign and Capital Improvements heroes Tom McCloskey, Steve Poland, Gary Weeber, Aboo Balamwalla, Jessie Smith, Bland McCartha, Steve Mensch, and Paul Ehrlich.

Most importantly we want to thank many of our members for contributing to the Capital Campaign. Your contributions made the Studio a reality. There is still a lot to do in the original shop, most notably upgrades to the dust collection system, so keep your contributions coming and remember the Guild in your end-of-year tax planning.

Congratulations to Jim O'Rourke on receiving the Volunteer of the Month Award for October.

In November we will be back with a regular monthly program please don't be shy about bringing your show-and-tell items. See you there.



GUILD CLASSES

THANK YOU FOR SUPPORTING OUR GUILD!

ONLINE (some have in-person option as well)

[Carving Demos with Masa Nitani - His Japanese Techniques](#) 11/8 7pm Zoom and in-person at Guild Studio

[Carvers Guild: Stropping for Beginners](#) 11/9 10am online or in person near Bethany, Larry Wade

[Carvers Guild: Spoon Carving for Beginners](#) 11/10 & 11/17 10am Online or in-person near Bethany, Al Plasch & Larry Wade

[Introduction to Carving \(Incised\)](#) 11/12 9:30am Zoom, Larry Wade

IN PERSON CLASSES & SPECIAL INTEREST GROUPS (SIGs)

Classes require a shop card and core tool certification. SIGs only need a shop card. Classes with openings are listed here; go to the [website](#) to add yourself to waitlists.

[Edge Tool Fundamentals](#) 11/2 9am Guild Studio, Michael Bourgo

[Women's SIG](#) 11/3 5:30 Guild Benchroom (First Thursdays), Ruth Warbington

[Hand Saw Fundamentals](#) 11/5 9am Guild Studio, Michael Bourgo

[Sharpening Chisels and Plane Irons](#) 11/5 1pm Guild Studio, Tim Moore

[Build a Cutting Board](#) 11/9 1pm Guild Studio, Mike Chia

[CNC SIG](#) 11/10 7pm Guild Studio, Craig Jones (Second Thursdays)

[Build a Saw Bench with Hand Tools](#) 11/12 9am Guild Studio, Ken Hall

[Hand Tool Series: Hand Plane Fundamentals](#) 11/16 9am Guild Studio, Michael Bourgo

[Open Carving Workshop with Masa Nitani](#) 11/16 & 11/29 1pm Guild Studio, Masa Nitani

[Carving SIG](#) 11/17 6pm Guild Studio, Larry Wade (Third Thursdays)

[Handtool SIG](#) 11/23 6pm Guild Studio, Michael Bourgo (Fourth Wednesdays)

[Make a Stake-Leg Stool](#) 11/26 9am Guild Studio, Steve Poland

INTRODUCTION TO GUILD SAFETY

New members: This is how you get your shop card. *Introduction to Guild Safety* is a prerequisite for other classes and for participating with our hands-on [Community Projects](#) groups. There is pre-class work, so bring your homework to class. (No open classes at time of publication, but check online for new classes or add yourself to a wait list.)

SHOP CERTIFICATION

You must complete *Introduction to Guild Safety* before taking certification classes. If you are new to woodworking, you then take *Getting Started-Shop Safety for Beginners: Hands On with Portable Power Tools*. Next, take *Core Tool Certification* and then *Advanced Tool Certification* classes.

[Advanced Tool Class - Router and Router Table](#) 11/9 5pm Guild Studio, Mark Klein

[Getting Started - Shop Safety for Beginners](#) 11/15 8:45am Guild Studio, Jeff Hilber

[Core Tool Certification - Evening](#) 11/15 & 11/22 5pm Guild Workshop, Mark Klein & Stuart Brown

[Getting Started - Shop Safety for Beginners](#) 11/22 8:45am Guild Studio, Jeff Hilber

[Core Tool Certification - Afternoon](#) 11/29 & 12/6 1pm Guild Workshop, Dennis Dolph

[Core Tool Certification - Evening](#) 11/29 & 12/6 5pm Guild Workshop, Mark Klein

Upcoming classes are posted on the bottom right of the [Woodworking Classes](#) page.

For the full list of education and shop training classes go to:

[GUILD EDUCATION CALENDAR](#)

Getting Started with portable power tools, 10/18/2022.



Sharing info and stories at the Guild Studio grand opening.

Carving Classes

PROGRAM - Carving Demos with Masa Nitani - his Japanese techniques — In-person or Zoom

[Click here](#) to register

November 8, 7:00pm

You can attend this free monthly carving program on Zoom or in person at the Guild of Oregon Woodworkers new Studio in Multnomah Village (limit 15).

Masamichi Nitani (“Masa”) is a retired woodworker and carver with specialized skills and approaches he learned in Sapporo, Japan as an apprentice. He has lived in Portland since 1987, and has taught several classes for us before the pandemic. Masa’s heritage is the Ainu indigenous population of Hokkaido, Japan’s northernmost island. This program will demonstrate his techniques and show examples and photos of his work. Topics will include his tools with customized handles, sharpening methods, his Japanese workbench, texturing, fixing flaws, design; and carving the Ainu bear. The program will be recorded.



CLASS - Open Carving Workshop with Masa Nitani - In-person only

[Click here](#) Two sessions, each four hours

November 16 and 29, 1:00-5:00

Masa is a very experienced carver and woodworker who taught workshops for us before the pandemic. This new workshop is a way to kick start having him teach in person again.

As a workshop, you will likely learn from others as well as Masa, and you will be expected to share your ideas, frustrations, and insights with others. Be prepared to stretch yourself, and help others do the same.

Rather than a class to make a specific project, this is a workshop where you will have the freedom to design and execute your own idea. It could be a vessel, bowl, kitchen accessory, abstract or practical art, or a piece just for exploration. You might decide to focus only on design and not spend any time on execution. You might bring in several pieces of challenging wood and explore multiple ideas.

Carving SIGS - in-person

Two groups meet monthly, one in the evening, one during daytimes, each two hours with an optional hour before to eat, work, or chat. Click on a link below. The current focus is on sharpening carving tools.

EVENING - at Guild Studio, 7:00-9:00pm, [click here](#) for third Thursdays

DAYTIME - at Woodcraft in Tigard 1:00 to 3:00pm, [click here](#) for 1st Thursdays



Take Ten Home Club, 10/16/2022. Guild Safety, one hundred fingers at a time.



Our hands are more than just convenient places to keep splinters. Introduction to Guild Safety, 10/02/2022.



HOW TO LEARN CNC ROUTING

By Rich Bader

There are many approaches to learning to incorporate CNC into your woodworking. Use or combine the methods that suit your learning style: Classes, product documentation, online tutorials and videos, mentorship, or just “playing around” are all available.

Learning CNC at the Guild

The CNC SIG members are producing a trilogy of introductory classes to teach you how to incorporate CNC techniques into your woodworking projects. CNC usage varies, from producing an entire project on CNC; or in other cases, using it for something specific, like joinery or ornamentation. Our goal is that after attending a series of three introductory classes you’ll have the foundational knowledge needed for any project. Additional classes will be offered in the future to explore the versatility of CNC woodworking through design and project oriented sessions

Currently in development is a trilogy of introductory classes. Meant to be taken as a sequence, they build on each other. After completing all three classes, you’ll have knowledge of, and a bit of experience with, the software used at the Guild (Vectric’s VCarve and Mach3), and hands-on operation of the Guild’s Legacy CNC machine. You’ll then be prepared to participate in the CNC Mentorship program, where you’ll be able to create and cut your own designs under the supervision of an experienced mentor.

In addition to the classes, the Guild has an active CNC SIG that meets regularly and includes member presented topics of interest and an opportunity to meet other CNC’ers. Sign up for the CNC SIG mailing list to stay informed about classes, meetings and other events of interest.

Here’s the three classes:

Introduction to CNC Routing — Overview, Toolpaths, and Operations & Safety

Overview — What is CNC and CNC routing? How can I use it in my woodworking? Is CNC right for me? These are the three primary questions that are addressed in the Over-

view class. Included is a survey of CNC machines and software, a description of the processes and software used for creating CNC work, an assessment of what it takes to enjoy using CNC, and numerous examples of the versatility of the system illustrated by the Guild members’ own work..

Toolpaths — Starting with a simple design for a sign, the students will create the toolpaths and configure other elements of the design to create the G-Code to cut the project. The tool database for bit selection, “speeds and feeds” settings, and other options and settings will all be explored. Each student will bring their own laptop with a free copy of V-Carve installed beforehand to use in class.

Operations & Safety — With G-Code in hand from the Toolpaths class, you will now have an opportunity to cut your sign. Basic machine operations and safety will be addressed including origin setting, workpiece workholding, changing bits and “touch off”. And what to do if things go wrong.

For more information, write to:
cnc.lead@guildoforegonwoodworkers.org

Regardless of how you learn, there are three main topics, as identified in this chart as categories:

The CNC Machining Process Overview			
Stage	Stage 1	Stage 2	Stage 3
Category	Design	Toolpaths	Machining
Purpose	Realise ideas, creation, problem	Creating the cut instructions for the machine	Removing material to reveal the design
Activity	CREATING 2D Shapes 3D Solids Surfaces Paths and Points	CUT STRATEGY Toolpaths Tool Choice Feed Rates	CONTROL Jogging Machine GCode Visualisation Setting XYZ Home Running Jobs
Software Tools	CAD (2D and 3D) & Vector Drawing Applications	CAM Software Manual Coding	Machine Control Software

Design and CAD (Computer Aided Design) Software — Most CNC design software resembles 2D design software you may be familiar with, such as Corel Draw or Adobe Illustrator. Many woodworkers jumpstart designs with existing images and models, some of which are often included in the software, or are available from 3rd party vendors. For some more advanced designs, 3D software features are required and familiarity with products like AutoCAD or SketchUp is helpful; 3D models are also readily available.

continued on page 9



CNC ROUTING ... continued from page 8**CAM (Computer Aided Manufacturing) Software** —

Once you have created a design, additional information is needed to instruct the CNC machine on how to cut it. You'll need to specify which kind of *toolpath* to use from a range available in your software. CAM features are typically included in CNC-focused design software. At this stage, the proper cutting bits are assigned to each toolpath, as well as "speeds and feeds" to specify the velocity of the cutting tools. The results of this stage are machine instructions called G-Code, and this "program" specifies the cutting to be done.

CNC Machine Operation and Safety — With your design now rendered as G-Code, it's time to prep your material, mount it on the spoilboard or in a jig, and prepare the machine for operation. The machine is typically powered up, reset to its origin, and then instructed as to the location of the origin of the workpiece. The proper cutting bit is installed and its position is calibrated. This setup procedure and then the execution of the G-Code file is managed by the control software (we use "Mach3" on the Guild's machine).

WHAT'S UP WITH ED?

By Gary Weeber, Education Director

Those of us who attended the Gala Event at the Guild facility on October 18 saw something special. The event not only displayed the broad scope of the Guild's programs but we were also able to see how much volunteers can do when they are committed to a common cause. We have come a long way since 2010 when I joined the Guild!

Much of this has been the product of one simple human characteristic— COMMITMENT. If we look at accomplishments, the commitment is extensive. It was not that many years ago that we had a target of 12 classes a year and no shop. Now, we are projecting that with Safety and Woodworking, we will be approaching 20 classes per month in 2023 and will be doing most of that in a new Studio.

The Studio is the physical representation of the Guild's commitment to Education. We are now activating a premier space for woodworking education that will include an extensive array of tools and accessories; volunteer hand built workbenches; an updated library; and some of the latest technology. **WE DID THIS.** We did it with the financial and volunteer labor of Guild members. *That is commitment.* Now we need to be committed to making it financially feasible and honing it to provide the best educational opportunities we can for our members.

"Commitment is an act, not a word" —

Jean-Paul Sartre

Starting in November, we plan to deliver almost all classes in the new Studio.

The only classes that we plan to routinely schedule in the existing shop will be the Core Tool Certification Classes and the Advanced Certification Classes on the wide belt sander (SAs only) and the sliding table saw. Here are some of changes you will see:

- ♦ We are developing a standard, repeating schedule for our safety classes and woodworking classes that we know will be offered multiple times during the year. This means that you will begin to see a pattern for when certain classes are going to be offered. This, in

turn, will help us schedule further in advance. Our goal is to provide you with a routine quarterly schedule, making that available six weeks in advance of the quarter. Be patient but that is the goal we are committed to.

- ♦ By the end of the year, we will be updating the *Class Catalogue* that is on the website to reflect our best projection of these repeating classes for 2023.
- ♦ We will have new classes and one-off classes that will be scheduled as they become available and as time permits. The extensive time available for classes now should make that quite feasible.
- ♦ We plan to update the Education website pages in the very near future so that the information reflects the many changes that have been made in the past year.
- ♦ The Studio now provides us with opportunity to bring in more International Masters. As many of you know, we have scheduled four International Masters appearances already for 2023! See [page eleven](#) for details.
- ♦ We are introducing CNC into our standard array of classes. Thanks to the commitment of the CNC Team, this component of our program is developing quickly. In addition, we also expect the delivery of a newer and better CNC machine in the immediate future that will be nicely nested in the corner of the Studio.
- ♦ Mentoring is going to move past being an idea and become a reality. Expect to see mentoring sessions available in the Studio for both CNC and Hand Tools...and perhaps more.

Here are some of the woodworking technique and project subjects that you will see in 2023:

- ♦ LEATHER IN WOODWORKING
- ♦ FOUNDATIONAL INFORMATION, TECHNIQUES AND SKILLS IN HAND TOOLS

continued on page 10

WHAT'S UP WITH ED? ... *continued from page 9*

- ◆ MAKING A CRAFTED LAMP
- ◆ THE ROLE OF STEEL FASTENERS IN WOODWORKING
- ◆ SHARPENING OF VARIOUS HAND TOOLS
- ◆ MAKING GIFTS FOR THE HOLIDAYS
- ◆ FINISHING TECHNIQUES
- ◆ BASIC FURNITURE BUILD PROJECTS
- ◆ CNC WOODWORKING: TECHNIQUES AND PROJECTS
- ◆ THE MILLING OF LUMBER
- ◆ MAKING CRAFTED BOXES WITH BOTH MACHINES AND HAND TOOLS
- ◆ THE ART OF KUMIKO
- ◆ AND MORE....

Because we have so many members now that are beginning and basic woodworkers, we are also developing a brand-new foundational series called **The Basics of Fine Woodworking**. This will be a six-class series that will utilize the construction of a crafted box so that students can

learn about the process of woodworking; understanding wood; basic joinery; introduction to hand tools; glue-ups; and introduction to finishing. We are really excited about this new series and hope to begin delivering it once per quarter in early 2023.

Finally, don't forget about the learning opportunities in our Special Interest Groups (SIGs). We have them every month in the form of Women's SIG, CNC SIG, Hand Tool SIG, and Carving SIG. We may have another SIG starting soon in Green Wood Woodworking...so watch for that.

If you, as a member, are not excited about the education opportunities that will be available to you in the Studio in 2023...well, you should be! Now, it is time for you to make the commitment. Make the commitment to proceed further on your own pathway to learning. Sign up for classes and have fun.

Just remember, none of this happens without volunteers. How will you be volunteering in Education during the remainder of 2022 and in 2023? We have easy ways for you to begin. Just contact us and we will get you set up.

Let's dive into the future! See you in the Studio.



TOY BUILD TEAM! (just a few of many: L>R: Dennis Brown, Steve Anderly, Aaron Endelmann, Jim Koobatian, Bill Tainter, David Wiper.

2023 Masters Events

Watch the Guild website for workshop event postings coming soon.

March 20-26 **Doug Stowe**

Two Workshops: Elegant Boxes



Instructor Retreat: Educational Sloyd – How People Learn

June 19 – 25 **Kelly Parker**

Workshop: Triptych Boxes

Workshop: Embellishment Techniques



September 9 – 17 **Michael Fortune**

Workshop: An Elegant Folding Chair

Workshop: Jigs & Fixtures – Design and Construction Considerations for Problem Solving

May 16 – 21 **Mary May**

Carving Workshops: Topics to be announced



THE GUILD STUDIO SPACE IS COMPLETE

By Steve Poland

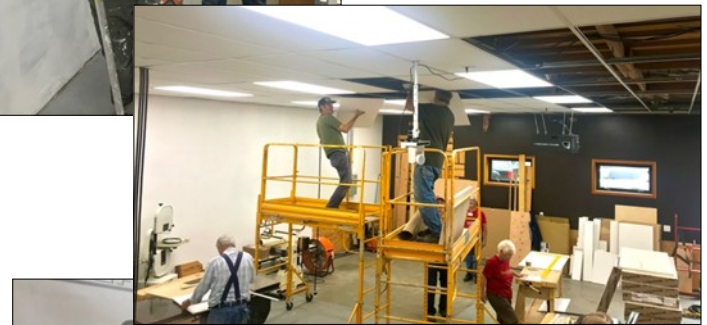
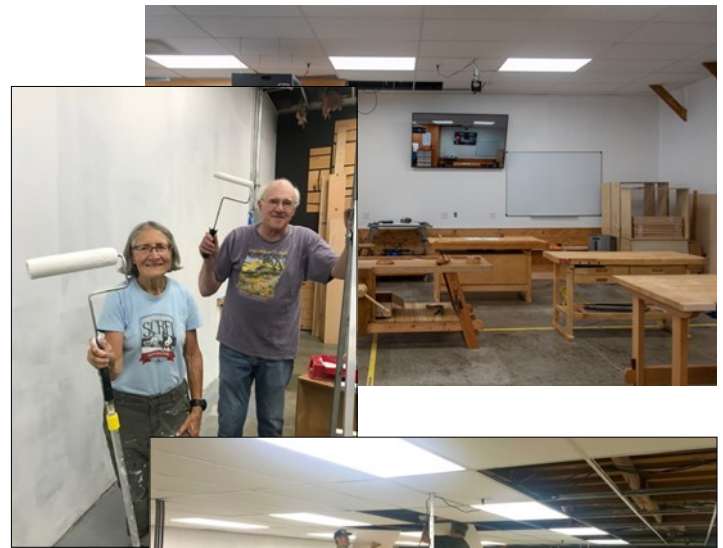
The Guild STUDIO space is complete, after 3 months of preparatory work by many of you volunteers!

The work included:

- ◆ Changing all of the Guild's door locks to "keyed-alike", including new fob actuated entrance locks.
- ◆ New alarm system & sensors for each of our three spaces.
- ◆ Removing existing dark ceiling panels, in preparation for electrician installing all new LED light fixtures.
- ◆ Electrician added a 100amp breaker panel to support 20 new 110v duplex power outlets, mostly arranged in quad boxes with two circuits each, plus six new 220v outlets, and some additional prep for AV system elements.
- ◆ Painting all the Studio shop and new Library space walls (three coats to cover the original dark paint).
- ◆ Infilling missing ceiling support grid above the garage door, and installing new white ceiling panels (about 20% having custom cuts).
- ◆ Education and Shop Ops teams collaborated to select and purchase new and used machines, and to assemble and set them up, including changing the JET 20" planer to a helical-type cutter head.
- ◆ Project Build teams are completing Roubo benches and storage cabinets.
- ◆ Doug Drake made a great Library table top, as well as new clamp racks.
- ◆ We borrowed some Toy Team time to shift the Library into the new space.
- ◆ Our IT team has installed overhead and oblique view cameras to record and/or broadcast class instructor presentations and to enhance the in-class visibility of instructor's work. Bland claims that instructors will only need to flip one switch to ignite the system!
- ◆ And thanks to our own way-finding design professional Michael Reed, we have signage identifying the space as the Guild's Studio.

Still to be wrapped up will be dust collection ducting from the three new Laguna collectors to individual machines, and organizing the needed array of hand tools etc.

Significantly our landlords at Greenline Fine Woodworking



continued on page 13

STUDIO...continued from page 12

have replaced the plumbing fixtures in the restroom, and shortly will have the expired HVAC system completely replaced.

Many of you were able to attend the STUDIO opening celebration / October monthly meeting. I hope you enjoyed the evening, presentations by project groups and SIGS, pizza & beer and camaraderie.

During the presentation by President Ed Swakon, we named James O'Rourke as the Gig Lewis Volunteer of the Month. I was enthusiastic in nominating Jim because he willingly took on learning how to operate and manage both the electronic lock system and the alarm system, a process that took many hours on the phone with their tech support folks and further hours getting all of us Shop Attendant Luddites kicked into shape to use the system without causing an ADT & Police response or his having to run to the shop.

And folks, if you do set off the alarm, please phone Jim O'Rourke or myself so we can help you with the problem and we'll know when we get the call from ADT that there is no need for them to call the Police. Our numbers are posted at each alarm panel.

We invited our landlords to the celebration, and it was gratifying to hear Jayne Cronlund's response, that she had not really realized how many things we provide for members and the community. She said it really is feeling like the dream that they discussed at the very beginning with Gig Lewis, where the facility could become a craft center for Multnomah Village.

I know I wasn't able to capture the names of everyone who has contributed to this effort, but here is a list of many of you who did:

Mike Adair, Steve Anderly, Al Arnsten, Rich Bader, Aboo Balamwalla, Virginia Benware, Carol Boyd, Brian Carroll, Dennis Dolph, Doug Drake, Ken Hall, Jon Harvey, Jeff Hilber, Craig Jones, Bill Keay, Mark Klein, John Lally, David Lentz, Bland McCartha, Tom McCloskey, Susan McDowell, Heidi McNamee, Tim Moore, Steve Poland, Michael Reed, Mike Sandman, John Sherman, Micah Stolowitz, Scott Stonecipher, Bill Tainter, Kate Thornton, Gabriel Toth-Fejel, Gary Weeber, Joe Wheaton, Kevin Wheeler, David Wiper. ... and several more!

Thank you all for your enthusiastic efforts and hope to see you in a class at the STUDIO soon!

Steve Poland, Facility Lead



GOOW GALA PIZZA AND BEER PARTY – WRAP-UP

By Roger Crooks

Thanks to everyone who attended this first-time event and for those who were not able to attend, please see the [PowerPoint presentation](#) highlighting the achievements of the Guild over the last few years. It was an amazing event with well over 100 members participating. We went through 325 slices of pizzas, 125 cookies, 5 Vegi-plates, and lots of beer (a first for a guild event). The silent auction was a success with 5 bundles of beautiful wood going at a great price.

After two years of Zoom, it was a chance for many members to see each other in person rather than on a small screen. For many new members, it was their first time at the shop. Especially nice was the high percentage of partners that came with members. Highlight of the party, other than seeing the new Studio, was a “job fair” approach where members could talk with leaders of various committees, SIGs and activities to learn more about what they do and volunteer to join. It's impressive when all the different activities we do are together at one time. The comment many had was “Had no idea all that the Guild does”

RAFFLE WINNERS

Grand Prize - Master's Class with Doug Stowe - David Martin Steamboat – Jenna Lucking
 Steamboat – Ron Pihulek
 Back scratcher – Pat Wheeler
 Hex box – Dennis Brown
 Woodpeckers Multi-knob – Casey Lay
 Measuring Tape – Linda Maroney
 Measuring Tape – Steve Moore



A DEMILUNE CARD/GAMING TABLE

By Dave Heim (romlulus@gmail.com)



This small table is based on an article in *Fine Wood Working* (Nov 2005) by Steve Latta. I added decorative veneering to the top using a design found online I've admired. The apron is brick laid poplar, veneered in mahogany, with solid mahogany legs. The top is veneered in crotch mahogany and East Indian rosewood, the stringing is holly and the marquetry uses a variety of dyed and unknown veneers. The two rear legs are mounted on swing arms that pivot to the rear and support the top leaf which opens to form a fully circular top. The opened top is veneered in plain mahogany with a walnut burl banding.

Antique tables of this design, with solid leaves, invariably seem to show some degree of warping in the top. To try to avoid this, I used a construction I found online. Plain-sawn poplar is ripped into narrow strips, rotated 90 degrees and glued up to form a wide, quarter-sawn panel, a more stable grain orientation. This panel was then veneered on both sides with a plain, two-ply veneer to enhance the stability and to provide a better substrate for the subsequent decorative veneer. I probably won't be around to find out if this actually does prevent warping.

I'd never done any veneering of this complexity, and so decided to make a practice top on an MDF substrate. As usual, the shapes were cut from veneer, joined with veneer tape, and pressed onto the substrate. The assembly to be pressed did not include the central, marquetry medallion, the ¼ inch black-white banding or the stringing separating the six lobes of the design. These were inlaid after pressing. After making all my mistakes on the practice top, the veneering of the actual top went fairly smoothly.

I found the design for the central, marquetry medallion in a book of needle point designs Ruth Warbington loaned me. The paterae at the top of each leg were made following one of Steve Latta's excellent DVDs. The black-white banding was made either on a straight form or on curved forms of the appropriate radii. After all the dust settled, the table was finished with shellac.



The central medallion with East Indian rosewood border



Each leg has a different patera design at the top.

This project stretched out over nine months. A good portion of that time was spent on side excursions to work on my marquetry and veneering skills. These side excursions are one of the pleasures of longer projects for me. With this card table finished, now maybe I can beat my wife at cribbage.

GIG LEWIS VOLUNTEER-OF-THE-MONTH AWARD

OCTOBER – JIM O'ROURKE

Each month one of the Guild most prestigious awards, the Gig Lewis Volunteer of the Month is given. Because the Guild is run entirely by volunteers, recognizing our volunteers is essential. Previous recipients of this award have volunteered in many ways. They might have actively participated in one or more of the many Community Outreach programs the Guild has or in Education or Shop Operations or contributed with a one-time project for the Guild. Some have taken on a role behind the scenes that is important to the Guild's ongoing operations. There are many ways and roles that members take to contribute to the Guild's ongoing success.

This month's recipient of the Volunteer of the Month is **Jim O'Rourke**.

Jim has been a volunteer for the Guild for some time including volunteering as a Shop Attendant and Instructor Assistant and has successfully assigned credentials to most of the SA's.

But his career background as an electrician and an electrical industrial project manager prepared him to take on the monumental task of learning how to manage both the ADT and LOCK system management for the Guild's facilities. He is also spending time on-site to ensure that SA's can get a hand understanding their opening and closing tasks related to the Security and Access Control changes. He also beta tests for the computer system updates and in-



Here is Jim with past-president Steve Poland.

stalling UPS systems for new Wi-Fi and alarm stations. Jim has also joined the IT department recently.

We are pleased to have Jim O'Rourke as our Gig Lewis Volunteer of the Month for October 2022.



THE STUDIO



Linda Howarth

Beech: The timber used by bodgers to turn the legs and spindles of Windsor chairs.

A couldn't-resist piece in the woods of West Sussex England.

40TH ANNUAL DESIGN IN WOOD COMPETITION

San Diego Fine Woodworkers Association Announce Call for Entries for the at the San Diego County Fair

The San Diego Fine Woodworkers in association with the San Diego County Fair is now calling for entries to the 40th Annual Design in Wood competition. The event is one of the premier woodworking exhibits in the nation and draws entries from around the globe.

More than \$20,000 in prizes will be awarded, including a \$1,000 prize for Best of Show.

The deadline to submit entries is April 29, 2023. The summer fair, located in Del Mar, CA, will run from June 7 to July 4, 2023.

The annual Design in Wood competition features 26 categories ranging from Contemporary Furniture to Contemporary Accessories to Scroll Saw Fretwork to Wood Carving, and many more. For a complete list of entry categories please visit www.sdfwa.org

For information about entries, visit the San Diego Woodworkers website at www.sdfair.com or www.sdfwa.org, or call 858-792-4207.

To view the winners of previous Design in Wood competitions, click here: <https://sdfwa.org/diw-photo-gallery/>

All entries are to be submitted online at www.sdfair.com. Contact us if you need more information.

San Diego Fine Woodworkers Association

The San Diego Fine Woodworkers Association (SDFWA) is a 501(c)(3) non-profit corporation, organized in 1982, to unite people who share a common interest and enthusiasm for working with wood. The association has grown into the largest woodworking guild in the United States! If you are interested in making things from wood, SDFWA is the place for you. The association currently has over 1100 members: men and women, amateurs and professionals, collaborating and sharing their ideas, techniques, expertise, and love of woodworking.

San Diego County Fair

With 1 million visitors each summer, the annual San Diego County Fair is one of the Top 10 fairs held in the U.S. and Canada.

Competition Contact information:

Ed Gladney

Coordinator, Design in Wood Exhibition
San Diego Fair

EdGladney@san.r.r.com

www.sdfair.com/design-in-wood



MULTNOMAH ARTS CENTER GALLERY, CALL TO ARTISTS

Deadline to submit: 12 pm on Tuesday, January 3rd, 2023

The Multnomah Arts Center (MAC) Gallery in Portland serves as an educational venue for the community and a supportive environment for artists to share their work. Artists who show here are residents of Oregon and southern Washington near Portland and are selected by a group jury process. Our exhibits reflect the artistic dynamism of the area, with an emphasis on the following: a wide spectrum of media is shown throughout the year; diverse subject matter is explored; unique perspectives are shared; multi-disciplinary and intersectional approaches are appreciated.

The 2023 Call for Artists is now open. Emerging and experienced visual artists are invited to apply. During the jurying process, 2-D and 3-D artists are typically paired to exhibit together. Requests for solo or group shows are also welcome. Musicians, writers, filmmakers and other artists whose work would complement the visual arts exhibits may also submit proposals. More information and the link to the online application can be found at www.multnomahartscenter.org/gallery.

The application deadline is 12 pm on Tuesday, January 3rd, 2023. All submission materials will be reviewed by the group jury, and artists will be notified of the jury's decisions by early February 2023. Exhibits will be scheduled between May 2023 - April 2024.

Email galleries@multnomahartscenter.org or call 503-823-2787 with questions.

The Multnomah Arts Center is a department of Portland Parks & Recreation. The City of Portland ensures meaningful access to City programs, services, and activities to comply with Civil Rights Title VI and ADA Title II laws and reasonably provides: translation, interpretation, modifications, accommodations, alternative formats, auxiliary aids, and services. To request these services, contact 503-823-2525, City TTY 503-823-6868, Relay Service: 711.

A MOMENT IN AN ENGLISH GARDEN



Don't forget to use Amazon Smile for your Amazon purchases. Every purchase results in a donation when you select the Guild of Oregon Woodworkers as the non-profit recipient!

THE GUILD IS PROUD TO BE SPONSORED BY:

The Guild is grateful to be supported by numerous local businesses, our sponsors. Please patronize them when you can. Most offer some kind of discount to members, with some restrictions. We hope you will thank them for their support when you are at the cash register. *Click on their logos below to go directly to their website.*

