

# OREGON WOOD WORKS

OUR NEXT MEETING—JUNE 16, 2007 >SATURDAY<

## WOODWORKERS ON WHEELS (BY BRIAN WARRINGTON)

This month we are going to enjoy another "mobile meeting", one where we drive to different locations and for a tour of wood related businesses. Saturday, June 16 is the day! Guild member Bill Bolstad, our first place professional in the months Intra-guild show, set this one up for us and it promises to be a great time. Thanks to Bill.

*Note: Because of the diverse nature of this trip, times are best guess, except Stop #1. Try to be prompt in departing one and arriving at the next so the next host will be able to start the tour.*

### Stop #1: Opal Wood Industries in Woodburn, 9:00am

They specialize in counter tops and other products made from "Woodsure", a product made by infusing wood with a special resin that greatly strengthens and enhances wood for a unique composition. Get there from I-5 to the Woodburn exit between Portland and Salem. Travel East on Hwy. 214 past the schools, under an overpass. Hang a left just after the PGE building on Progress Way. You will see a "for lease" sign on a large building. Drive behind it to find the center of three other buildings; you're there, 2550 Progress Way.

### Stop #2: Northwest Timber, 11:00 am

After an hour or so we'll travel South on I-5 to the town of Jefferson, about 45 minutes away. There we will visit Northwest Timber, a company specializing in premium and unusual cuts of mostly local woods. We will see what they have, as well as what promises to be an awesome tour of a home full of projects made from their woods. Traveling south on I-5 take exit #243. Then turn left on Ankeny Hill Road. In less than a mile take a right on Jefferson Hwy, then 4 1/2 miles or so turn left on S. Main Street. Then S. Main turns into Jefferson-Scio Hwy after about 1/2 mile. Keep going another 1/2 mile and you will see them at 3229 Jefferson-Scio.

### Lunch: 12:30 pm

After NW Timber we'll break for lunch at a local restaurant or you can bring some food of your own. Let's figure on an hour or so

### Stop #3: Bill Bolstad, 2:00pm

Off to Bill's shop to learn his ways for making tables. Bill is a very gifted woodworker and whatever he shares is worth learning. To get there go back into Jefferson. Then go left on Talbot Rd. which is just past the middle school; cross over the freeway and take a right on Marlatt Rd. at the intersection with a fire station and a church. The 3rd house on the right is Bills, 13334 Marlatt Rd. From I-5, take exit 242, West 2 miles, then right on Marlatt.

Check their web sites for some great information and a preview of what we are going to see. If you get lost, here are some phone numbers as well.

Opalwoodindustries.com 503-982-5324  
 NW Timber.com 541-327-1000  
 BolstadBoxes.com 541-327-2280 (home)

I hope to see plenty of you out there. Carpool to save a buck or 70 if you can. Contact me at kingnomad3@yahoo.com if you would be willing to drive others, or need a ride to the event. I will put people in touch with each other as possible.



#### Inside this Issue:

<i>President: Directions</i>	2
<i>3rd Intra-Guild Show</i>	3
<i>Welcome Chuck</i>	4
<i>Show of the Guilds</i>	5
<i>Hand Tools &amp; Wine</i>	5
<i>Stagecoaches</i>	6
<i>Do You Believe...</i>	7
<i>Easy-Off</i>	7
<i>OCAC Student Projects</i>	8
<i>Territorial Express</i>	9
<i>Frame Class</i>	9
<i>Half a Century</i>	9

## NEW DIRECTIONS & OLDIES BUT GOODIES

BY LEE JOHNSON, PRESIDENT

### Something New

The 70-year old Contemporary Crafts Museum and Gallery is changing its name and its shape, and is asking us to go along with it. It is changing to the Museum of Contemporary Craft, moving uptown to the Park Blocks at Davis, and expanding both its space and its functions.

As part of the change, Museum staff has called together a "Circle of Guilds" composed of craft guilds and clubs in the Portland metropolitan area. They have asked us to be part of that group, and we now are. Because I don't have enough to do in my life, I volunteered to be on the group's steering committee. It is an opportunity for our little club to move uptown too, and we simply cannot pass it up.

The core opportunity is to re-connect fine woodworking to the other art crafts in the Portland metro area -- potters, jewelry makers, glass arts, blacksmiths, sculptors, weavers. The connection gets us into the Pearl District art and craft scene both in work with the Museum and being able to have a presence at Art in the Pearl which is becoming the premier art craft show in the Pacific Northwest. (Sorry, Bellevue Arts Fair; Art in the Pearl is passing you up.)

We have been asked to participate in the July Museum opening by having a booth at a "Block Party"; we've already been asked to do Saturday demos at the Museum and exhibit during the opening major Museum Exhibit, "Craft in America" (check

www.CraftInAmerica.org) from mid-September to mid-October.

I am pretty -- no, really excited about this. It will "move us uptown" in more ways than I probably imagine right now. What a great opportunity!

### Oldies but Goodies

At the same time that we might be expanding our artsy side of things, the Board had a good, long discussion at its recent quarterly meeting about the Guild's basic functions of education and "networking" for its members. We are keenly aware that one of the biggest reasons for people belonging to the Guild is to learn about and share fundamental wood-working skills -- both the tools of the trade and the tricks of the trade.

This month's "Intra-Guild Show" gave us a good look at why we do that; the work in all three categories, beginner, intermediate and advanced, was superlative. What fun it was to see the work you're producing!

So what we hope to do is produce a good mix of education opportunities across the board -- for beginners, intermediates and advanced woodworkers. Watch for the seminar & workshop opportunities, don't be afraid to ask for information or help from those in the club who know what you want to know, and aim for eventually exhibiting your work "uptown".

## POSITION AVAILABLE—GUILD MEMBER OPPORTUNITY

Bridge City Tool Works is looking for a part-time repair person. An opportunity for a Guild member. Currently it is an off site assignment where you could take the tool repairs home and use your own equipment. Many times repairs would involve reconditioning or recalibrating our tools. The job would require picking up or dropping off tool repairs 2-4 times a month at our showroom location. Pay negotiable Send your resume and/or cover letter to: natasha@bridgecitytools.com



### A NEW SPONSOR

Welcome to Irwin Industrial Tools as a new Guild sponsor.

IRWIN Industrial Tools manufactures and distributes professional grade hand tools and power tool accessories worldwide for trade professionals who demand superior performance and durability on the job. IRWIN Industrial Tools features brands such as IRWIN®, Vise-Grip®, Marathon®, Quick-Grip®, Speedbor®, Strait-Line®, Unibit®, and Hanson®.

### SPECIAL THANKS TO DAVE

The Best of Show Plaque at our Intra Guild show was made by Dave Dimoff. Starting with a piece of Bubinga from his own supply, he "gilted" it by hand with gold paint. Gilting, if you don't know, is the art of laying gold leaf with a brush for artistic purposes. Thank you Dave for this effort. A brass plate is being engraved for Ariel Enriquez, this years winner.

# THE 3RD ANNUAL INTRA-GUILD SHOW

**A**nother fantastic showing of woodworking projects for the annual Intra Guild show.

And the surprise and highlight of the evening, held in strictest secrecy until the judging was complete. Our judges have always been super experts in woodworking. To make a long story short, our judges tonight were six teenage shop students from Sherwood, David Douglas and Franklin high schools, two from each. What an incredible and delightful treat.



The Judges: L-R SH-Rebecca, Jake, DD-Mitchell, Patrick, MC-Marilyn, FH-Nathan, Kevin

These students are always the ones being judged, graded, and critiqued. And they did an outstanding job. It's a very difficult contest to judge, as all the entries are wonderful. I would like to think that I would have picked the winners they did, except that I know I could not do it.

In the following photos are the winners. Space prohibits photos of all the entries. If there is interest they might be able to be posted to the website.

See the list at the end for a summary of all the people involved in this event. The judges, instructors and the winners.



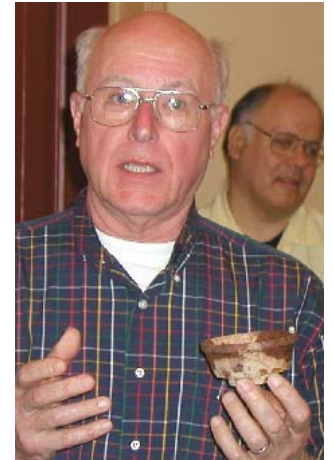
1st Place Beginner: John Semm



2nd Place Beginner: Peter Borho



1st Place Intermediate: Lisa Borho



3rd Place Beginner: Gig Lewis



2nd Place Intermediate: Richard Hall



# INTRA-GUILD SHOW WINNERS



3rd Place Intermediate:  
Tom Splaver



3rd Place Professional: Len Walko



1st Place Professional: Bill Bolstad



Best of Show: Ariel Enriquez



## THE JUDGES

### Sherwood High School

Mitchell Hanks & Patrick Marshall  
Instructor, John Niebergall

### David Douglas High School

Jake Grieve & Rebecca Price  
Instructor, Doug Ivey

### Franklin High School

Nathan Howard & Kevin Smith  
Instructor, Charles Landers



2nd Place Professional: Steve Philips

## WELCOME TO CHUCK



The Guild welcomes Charles Landers to the recently created position of High School Liaison. Chuck manages the wood shop at Franklin High School, a place with which you are all well familiar. Thanks to his efforts we have begun to use their shop on an increasing basis. He has the school open for Guild classes, community projects such as the German American School bookcases and any meeting that we have there. He also provides visibility and support to the school administration about the Guild and our activities

Welcome Chuck and thank you for all you do

# A SHOW OF THE GUILDS

BY BOB OSWALD

Known best as the Potters Guild Show, this show pulls together a number of Guild's from the Portland area. It was quite a showing. This year woodworking was added to their offerings. The newly formed Northwest Fine Woodworkers had a wonderful display of extremely fine pieces of work. This group is made up of a number of Guild members and all are professional woodworkers, making their living at this craft. A few photos here show the kind of work they presented..



It took a few minutes to get oriented as each Guild was set up in a different hall at the Con-

vention Center. Even first thing Friday morning, the traffic flow was heavy. So many different crafts were represented in this show. Something for everyone and all high quality exhibits.

Reports are that the show was very successful.



Guilds represented were:

- Oregon Potters Association
- Northwest Fine Woodworkers
- Oregon Glass Guild
- Portland Handweavers Guild
- Portland Bead Society
- Creative Metal Arts Guild



# HAND TOOLS & WINE

Several premium hand tool manufacturers put on a beautiful show of the finest hand tools you can buy. At a quiet picturesque setting just East of Newburg, folks were streaming in as the doors opened.

Represented were Lee-Nielson, Bridge City Tools, Blue Spruce Tool Works and more. The peaceful rural setting of Chehalem winery was the most appropriate setting for this event. The whisper of wind in the trees on this warm sunny afternoon was augmented only by the whisper of wood shavings from finely tuned hand planes. Demonstrations all day long; planes, chisels, spokeshaves, sharpening to a razor edge. All by hand.



As early as noon, the event was well attended by Guild members and many other people of the woodworking community. Show specials attracted sales. And all the vendors conveyed a lot of one-on-one information about this woodworking craft in its most basic and enjoyable form.



Of course Chehalem winery was sampling several of their new releases, all very nice wines.



# STAGECOACHES-TWO EXCITING EVENTS

BY BOB OSWALD

**H**ere's a fun adventure. On the visit to OCAC for the student critique I got to chatting with Rob Lewis, the woodshop manager. You may remember one of our meetings up there where Rob gave us a tour of building coaches, including firing a steel 'tyre' onto a wagon wheel. Well Rob is well known as a coach building master, having now completed a number of them. So here's the story. Rob tells me:

*It was Miss Karen, Gary, and me having lunch one day while we were involved in another project, when the whole idea came up about the mail run. Karen had mentioned that she has always wanted to re-enact the mail run that she was researching for her book. I just thought it would be fun to do an overnight stage run of any sort. She said something to the effect that "we should do that one of these days" and I replied "how about next year?"*



*Karen Johnson's book, I don't even know if she has a title yet, is going to be about the route we are doing for the stage run this September.*

*My partner in all of this is Gary Manning. Truly non of this would be even possible with out his help and leadership. Gary and I are partners in the coach actually both of the stages I am working on right now. Gary is making the wheels for the small one in his garage and he has ordered the wheels for the big one from a friend in Moscow, Idaho.*

*The fellow making the wheels is Bill Twigg and is one of the best if not the best wheelwright in the business today. If you want to see his web site just Google his name and Moscow Carriage Company.*

*Gary works as an engineer for a hi tech manufacturing firm. He came from the Aero space industry and has worked on stuff for the space shuttle. We have talked for many years about doing a combined project and these 2 coaches are going to be our first projects together. Gary is the real brains behind the project. I feel a bit guilty about that because I get all the fun stuff and it seems like he gets all the yucky jobs. Oh well I think we are both having fun at this.*

*And the rest is history as they say. We started making plans right away. I need to go. I got a stage coach to build.*

It is a full-size replica of an Abbot & Downing mail coach.. Lumber was delivered May 15 at 7:00am It has to be complete by the end of August. That's a pretty fantastic

timeline. But it's the reason for an upcoming event in Washington., the Territorial Express Stagecoach Run.

150 board feet of 5/4 ash was unloaded by 7:15. Careful grading of the lumber yielded 5 stacks to be dedicated to specific parts of the coach.

About 7:45, working without plans, the saw, jointer and planer were screaming their hearts out. In a brief lull I asked Rob if he had memorized the dimensions for the entire coach. His reply "I've been dreaming about this day for a very long time. I didn't sleep last night."

It seems to take me hours to get a project started. Rob was cutting lumber a half hour after the truck left. His years of experience in woodworking and many, many hours building coaches allowed this project to get off to a flying start.

Amanda Wall-Graf, a first year woodworking student at OCAC



was on hand to help. Having moved



here from Nova Scotia, she's headed into the woodworking field. They do good work 'up there on the hill'.

If you want to help with such a project, Rob is open to volunteers. Contact Rob at 503-297-5544 or rlewis@ocac.edu



## DO YOU BELIEVE IN SANTA CLAUS?

**F**riends. This happened to me quite a few years ago and I finally decided to relate the events for you all. Got a hankie?

I had a big shop downtown and I shared parking lots with a very popular breakfast and lunch cafe.

It was in the spring and I had just started to open my side door that looked out into the parking lot for the fresh spring air. I saw a small boy standing on the step watching me as I was fixing a wooden doll that needed a head reattached. I was holding the head in place waiting for the super glue to set. He looked up at me and said, "Are you Santa Claus?" Just then his mother came up and told her son, "Don't bother the man". I said it was fine and invited them into my shop for a quick tour.

The boy was about 8 or 9 and his eyes were the size of saucers. As we walked through the shop his mom explained to me that her son had a severe learning disability and loved to see mechanical things.

I make a wooden doo-dad that some of the old Guild members have received from me. They are a three dimensional cutout done on the band saw, (Maybe one of you will share theirs with us in a photo). I asked her if they could stay and I would make something special for him that would not take too much time. I would really like to do it for him as he was so taken with my shop. Maybe he touched my heart a little... so, I took a square block of wood about 4 inches on the sides and told him that this block had a surprise inside just for him.

I asked him what his favorite thing in the whole world was and he said, "Baseball". I laid out a side profile of a baseball player on one side and a fielders mitt on the other. His eyes lit up and he reached for it and I said that he must wait until was done with it. He looked at me as to say, "It is perfect now, don't screw it up".

I have a box in the shop that I stand on because I am somewhat height challenged. I asked his mom if it was ok for him to stand in it to watch me cut out the figures out of the block of wood. The height was just right; his eyes were

just at the right height to follow every move I made. He stood stock still as he watched the player and the mitt come to life.

As I handed it to him I looked his mother and she was standing there with tears running down her face and the most wonderful look in her eyes that can be imagined. The little boy climbed off the box and threw his arms around me and said, "I know you are Santa and thank you for this special gift, Mom and I have to go now, and Thank You again". His mother was overwhelmed and hugged me and thanked me for the gift.

I never saw either them again.

Years went by and in the spring of the year I had the door open to let in the fresh spring air. I was working at my bench, carving the University of Oregon Duck jumping out of the O when a small voice said, "You must be Santa". I remembered a small boy saying that to me so long ago, but, when I looked around there was a well dressed young man in a snappy casual sport suit with a very pretty woman on his arm. He turned to her and said, "This is the man I tell you about."

He told me that his learning disability was related to the loss of his father and at that young age had given up on everything. That the doctors could not do anything and that he was sinking deeper and deeper into the morass of depression and no one could find help for him. His mother was at her wits end and they moved to another state to find help for him. He would not let go of the wooden figure I had made for him and it struck a cord in his mind and the cure was in the belief of the magic that something could be made out of a nothing block of wood. His cure was complete. He and his new wife were passing through my little town on their way to a new job that he had after graduating from the University of Oregon.

Now, that is the end of my story....I never saw him again and I never learned his name.

Respectfully,

Frank N. LaRoque

## TIPS: EASY OFF WITH IT

BY ROB LEWIS, OREGON COLLEGE OF ART AND CRAFT

**T**ime for the saw blades trip to the sharpening shop?? Often that dull and smoking saw blade is really still sharp, hiding beneath a built up coat of goo and resin. This occurs commonly and is hastened by cutting the softer woods or plywood. An easy fix to extend the life between sharpenings is a simple cleaning. And the most effective, inexpensive cleaner around is oven Easy Off.

Spray it on the blade and let it soak for a few minutes. Then wash it off with running water and a soft brush. It may take a couple of treatments. Of course thoroughly dry the blade and coat it with a rust inhibitor. This doesn't work particularly well with bandsaw blades because very often the temper has been destroyed through overheating caused by the buildup of debris. But it's great on carbide saw blades.

# OCAC STUDENT PROJECTS – MAGNIFICENT SEVEN

BY BOB OSWALD

Calling OCAC to follow up on a Guild question I wound up being invited by Jake, a *first year* student. to sit in on the final critique of their class projects. And it was a delightful treat. So many creative ideas expressed in wood. Listening to the rationale behind each inspiration—riveting. So sad however is that it is impossible to convey three wonderful hours in this simple report.

Seeing projects evolve, outside the box thinking, rebellious, inventive; they teach freedom at OCAC. So here’s a little glimpse into a found object, the inspiration for a wall piece and evolution to a table. Visit the OCAC gallery in a little spare time. Creative arts are always on display there.

The class was taught by Sue Wheatley and critiqued by Sue, husband Gregg Heintz and Rob Lewis. The students are: Cheraya Esters, Paul Kottke, Amanda Wall-Graf, Jake Anglesse, Nicholas Musso, Yvonne McKimens and Austin Relf

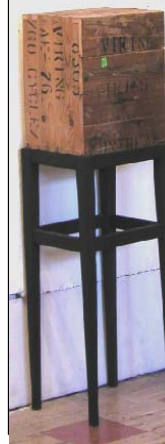
Here is your assignment:

### Project #4: Found Object Incorporated

*This project must incorporate the same found object from project #3 (a wall hanging piece with a drawer and a shelf). It should be used as an integral component, not just a handle for a door or drawer. Think of how this piece could be used in a different way than its original intent. How can you give it a second life? This piece must be freestanding, and must use a dove tail drawer. You will build the carcass first. You can build a drawer to fit the situation.*



Sue, Gregg, Jake, Rob, Nick, Paul, Amanda, Chereya, Austin, Yvonne



Amanda: an old crate in the trash, it deserved a stately pedestal. What began as sharp contrast between used and new, discarded and elegant, brought an integrated design. To authenticate it, ship it UPS to New Your and back.... hmmm, a thought.



Austin: a cheesy flower in a thrift store, inspiration for an air-root flower bed. "There's nothing going on but it's still contained"



Yvonne—Half a coffee cup, a place to enjoy it. The table has a deeply cushioned top that makes it a place to sit, and read, and ponder.



Jake: I decided it had to have a concrete top. It just seemed to fit. I may get rid of the steel straps. The shipping crate should be distressed but I like it new and clean. A contrast to the table..



Chereya: Termite tracks. Her wall piece looked like the king of termites lived behind. The table was a childhood thing... a place to sit and draw. Ant the beauty of this black walnut makes you want to sit... and linger.

Paul: Found a wallet. Need a place to keep it. The wall hangings provided that secret place. He has flat files for his artwork, so the table has two flat file drawers for those smaller special things, to match the wallet components hanging on the wall above. Acid stains for age; a courageous step forward.



Nick: A typewriter inspired this rebellious piece. Rules were followed to the letter, but he was able to express himself, create an unusual project ... be different. A table has a horizontal surface. It had a dovetail drawer 3x3x9 inches. Disguised into the block as a whole; a million pieces like a typewriter; 32 board-feet of scraps.



"I think I'll build a second one. I learned a few things"



## TERRITORIAL EXPRESS

**A** stage coach run carrying United States mail and passengers.. 90 miles of staging in three days! Between Longview and Olympia-- September 21-23, 2007.

Over 130 years ago, the last stage coach rumbled northward from Longview to Olympia, capital of Washington territory. This main line carried mail, passengers and freight from 1853 to 1873 when the stage was made obsolete by the new Northern Pacific railroad through Southwest Washington.

Join the fun this September as we retrace the stagecoach days of yore. A custom-made reproduction of an Abbott & Downing coach will haul people over the 90 mi. route. Traveling over the original road as much as possible, the stage will stop approximately every 10 mi. to change horses. On each leg of the trip, paying passengers will enjoy the company of living history performers, who portray characters from the past.

For more information, contact Karen Johnson 360-748-7657 or Rob Lewis at 5 03-679-8788

You can learn more about the Stagecoach run by looking into [www.TerritorialExpress.com](http://www.TerritorialExpress.com) Rob is building the coach (See page 6) for this event. How's that for pressure!!



### HALF A CENTURY

Bill Bolstad makes exquisite wooden jewelry boxes and tables. And this year is a milestone for the woodworker. He will mark the 50th anniversary as a professional woodworker. In 1957 he sold his first wooden item, a Martin birdhouse.

Lloyd and Lou Munter saw the twelve apartment Martin house that Bill made for his family and ordered one for themselves. They paid Bill \$5.00 for a similar one. Bill's vocation as a professional woodworker was underway at age 12.

During the past 50 years, Bill has built over 90,000 boxes, 1000 tables, and other items of furniture.

## 1<sup>st</sup> Annual Amity Craft Fair

Sunday, July 22nd 2007  
Downtown Amity, OR  
9:00am - 4:00pm

10' x 10' spaces are available for a \$15 or 2 for \$25. All spaces are outdoors. You will need to supply your own tables and tents. Contact [myadmartin@comcast.net](mailto:myadmartin@comcast.net) or Mandy at 503-435-9687. Application Deadline: June 22

## THE FRAME CLASS

BY BOB OSWALD

**I**n a rare, hands on class where everyone makes sawdust, five stalwart souls went through the trials of picture framing. Everyone showed up with rough lumber so we all had an opportunity to go from the milling through to the finished product. It was a fun class and I think there was a hint or two picked up along the way. Accomplished woodworkers needed little or no supervision. A picture frame should not be that difficult. But as we talk through the various steps, it was obvious that quit bit of consideration is required in framing a picture. Woodworking is about design. Whether you create from scratch or purchase, you have to develop criteria. You do the design on a large project but this phase pales in significance to the size of the rest of the task. The picture frame is a woodworking project, but the unique situation is that the design is the most significant part of the project. You do one picture frame and the next one is a new design. That's what makes this a challenging.



A highlight of the class was discussion about the ultimate universal miter jig. It is based on one that George DuBois shared in his jigs class last year. And I was surprised and delighted to find that nearly everyone in this class had taken George's class and had built the jig. So

this 'ultimate' one added a bit of T-track and hardware to make it expandable for the big projects and easily adjustable for frequent use.

Thanks again to Chuck for the use of the school, for always being there to help. And a big thanks to Kaweeta Schroeder for a whole CD a photos. I regret that I can't publish them all.



*The Guild of Oregon Woodworkers is a group of professional and amateur woodworkers like you, committed to developing our craftsmanship and wood-working business skills. The Guild offers many benefits for members, including:*

- *monthly educational meetings*
- *monthly newsletter*
- *mentoring program to help members develop their skills in specific areas*
- *discounts*
- *woodworking shows*
- *network of business partners (the key to our development as members and as a Guild, providing additional learning opportunities)*
- *and a network of support.*

*For information on how you can become a member, contact Guild President Lee Johnson at 503-292-4340 or email [leejohnson13@comcast.net](mailto:leejohnson13@comcast.net)*

## **GUILD OF OREGON WOODWORKERS**

P.O. Box 13744, Portland, OR 97213-0744

### **CLASSES, SEMINARS, DEMOS, AND SUCH....**

**Northwest Woodworking Studio** 503-284-1644, [www.northwestwoodworking.com](http://www.northwestwoodworking.com)

**Rockler Woodworking** 503-672-7266, [www.rockler.com](http://www.rockler.com)

**Oregon College of Art and Craft** 503-297-5544, [www.ocac.com](http://www.ocac.com)

**Woodcraft** 503-684-1428, [www.woodcraft.com](http://www.woodcraft.com)

**Woodcrafters** 503-231-0226, 212 NE 6th Avenue, Portland, [www.woodcrafters.us](http://www.woodcrafters.us)

---

### **THE GUILD IS PROUD TO BE SPONSORED BY:**

Barbo Machinery  
Crosscut Hardwoods  
Goby Walnut Products  
Hardwood Industries

Irwin Industrial Tools  
Lumber Products  
Woodcrafters, Portland

---

### **AFFILIATES:**

Northwest Woodworking Studio  
Oregon College of Art and Craft

\* Some sponsors offer discounts to current Guild members. Refer to the website under *Benefits/Discounts* for details and restrictions. Remember to thank them for their generosity.

---

### **Guild of Oregon Woodworkers**

P.O. Box 13744  
Portland, OR 97213-0744

**We're on the Web!**

[www.GuildOfOregonWoodworkers.com](http://www.GuildOfOregonWoodworkers.com)